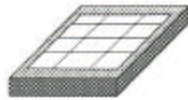


Remote Control at a Glance

Connecting

Have your SecureNet Key ready.



start

1

Hook up your modem to your phone.
Turn on your PC.



For details, see Topic U018.

2

Navigate to the Applications Manager
(or Program Manager) window.



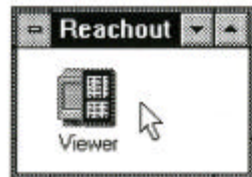
3

Choose the ReachOut group icon.



4

Choose the Viewer icon in the
ReachOut group window.



5

Choose the Remote Control button
in the lower-left corner of the
ReachOut Viewer window.



6

Edit the dial-in phone number that appears
in the ReachOut Connect window if:

- This is the first time you are using remote control on your PC.
- You are using a different dial-in phone number than the last time you connected using remote control.

For details, see Topic U012.

7

Select the dial-in phone number you want to
use from the ReachOut Connect window.
Then, choose the OK button.



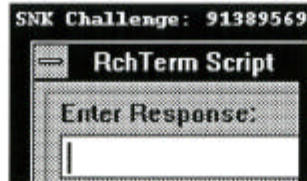
8

The ReachOut Dialing Status window
and the modem's sounds give you
feedback on your connection.



9

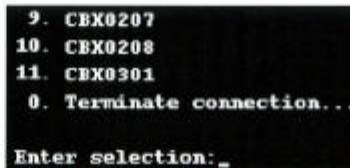
Respond to the security challenge.



For details, see Topic U015.

10

At the prompt `Enter selection`, type
a number, such as 9 or 10, to choose a
Cubix PC. Then, press ENTER.



11

Login at the CNA blue screen. If you don't
see this screen, try pressing ENTER.



finish

12

Disconnecting

Press **SHIFT + SHIFT** to display the
ReachOut Viewer window.



start

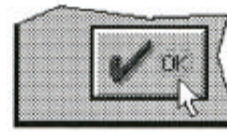
1

Choose the Disconnect button in the
ReachOut Viewer window.



2

Choose the OK button in the Confirm
Disconnect dialog box.



3

Choose the Exit button in the
ReachOut Viewer window.



finish

4