

ABC Database Tables

Overview

The ABC Imaging system stores the data used in the following Oracle database tables:

- COMPANY
- WFDEPARTMENT
- USVENDOR
- USDOCUMENTTYPE
- WJUSER
- USERSECURITY
- INDEXTYPE
- OPTICALVOLUME
- SIBATCHHEADER
- SIBATCHDETAIL
- SIBATCHDOCUMENTLIST
- SIBADSCAN
- SIDOCUMENTHEADER
- USDOCUMENTPAGES
- WJANOTES

The rest of this chapter contains:

- Entity-relationship diagrams that show you the how these tables relate
- A detailed description of each table

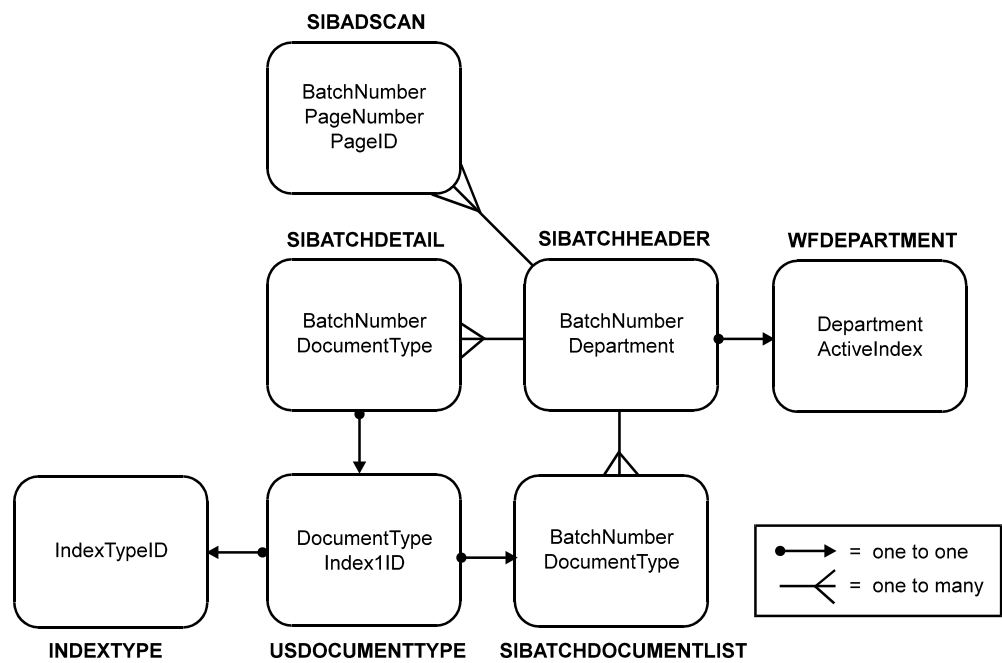
Entity-Relationship Diagrams

This section contains diagrams that illustrate:

- Batch table relationships
- Document table relationships

Batch Table Relationships

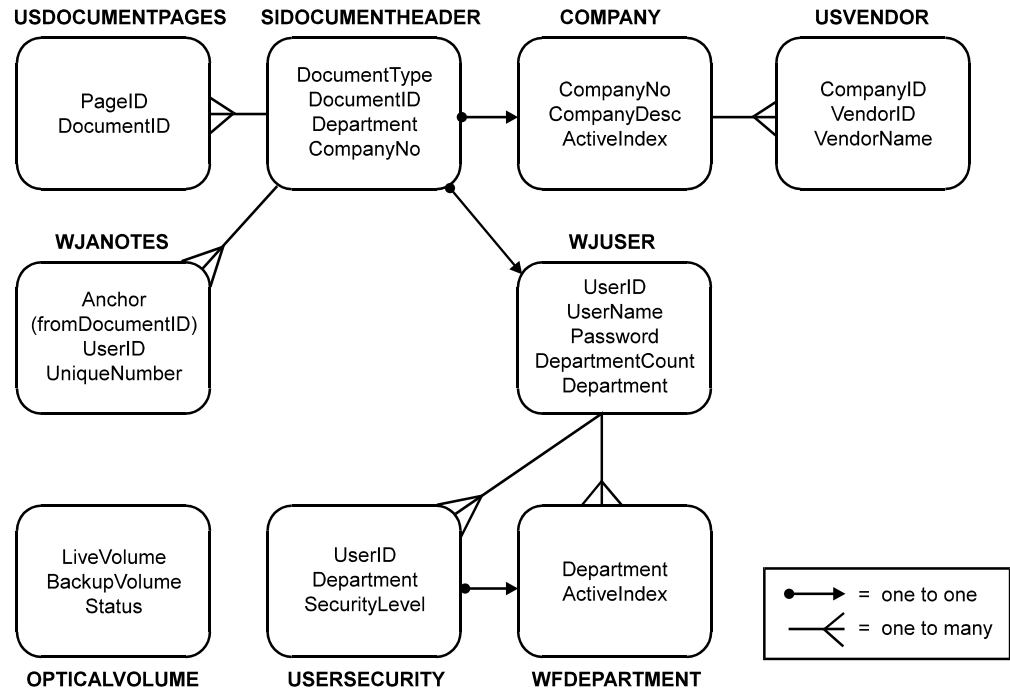
The following diagram shows you how the ABC Imaging system stores batch data.



Batch Table Relationships

Document Table Relationships

The following diagram shows you how the ABC Imaging system stores document data. In the diagram, note that the Anchor field in WJANOTES is the same as the DocumentID field in SIDOCUMENTHEADER.



Document Table Relationships

Database Table Descriptions

This section details each of the database tables. For each table, the following information is included:

- Table purpose
- Field names, types, and descriptions

COMPANY

The COMPANY table contains data about the ABC companies, or markets, set up on the ABC Imaging system. There is one record for each company. DEF Vendor populated this table when setting up the system. If changes are made to ABC companies, Accounts Payable staff use the Imaging program's Company Number Maintenance Qualifier, Company Number Maintenance, and Company # Delete windows to maintain the records in this table.



See: For information on maintaining companies, see "[Performing Administrative Functions](#)."

The following table details the fields in the COMPANY database table.

Field Name	Type	Description
CompanyNo	Char(4)	The unique number of the company. SAP determines company numbers.
CompanyDesc	Char(30)	A description of the company.
ActiveIndex	Char(1)	A flag indicating if the company number is currently available for indexing; Y=available, N=not available.

COMPANY Table Fields

WFDEPARTMENT

The WFDEPARTMENT table contains data about the ABC departments set up to use the ABC Imaging system. There is one record for each department. DEF Vendor populated this table when setting up the system. It is unlikely changes will ever need to be made to this table.

The following table details the fields in the WFDEPARTMENT database table.

Field Name	Type	Description
Department	Char(20)	The unique name of the ABC department.
ActiveIndex	Char(1)	A flag indicating if the department is currently available for indexing; Y=available, N=not available.

WFDEPARTMENT Table Fields

USVENDOR

The USVENDOR table contains data about the ABC vendors and employees set up on the ABC Imaging system. There is one record for each vendor who has been issued a check and for each employee who has been issued a reimbursement. Accounts Payable staff maintains the records in this table by running the Vendor Download program and uploading the data the routine generates.



See: For information on running the Vendor Download program and uploading the vendor data, see [“Performing Administrative Functions.”](#)

The following table details the fields in the USVENDOR database table.

Field Name	Type	Description
CompanyID	Char(4)	The number of the company (market) associated with the vendor or employee.
VendorID	Char(10)	The unique number of the vendor or employee. SAP determines vendor numbers. GHI determines payroll numbers, which are used as employee numbers in the ABC Imaging system.
VendorName	Char(35)	The name of the vendor or employee.
ActiveIndex	Char(1)	A flag indicating if the vendor number is currently available for indexing; Y=available, N=not available.

USVENDOR Table Fields